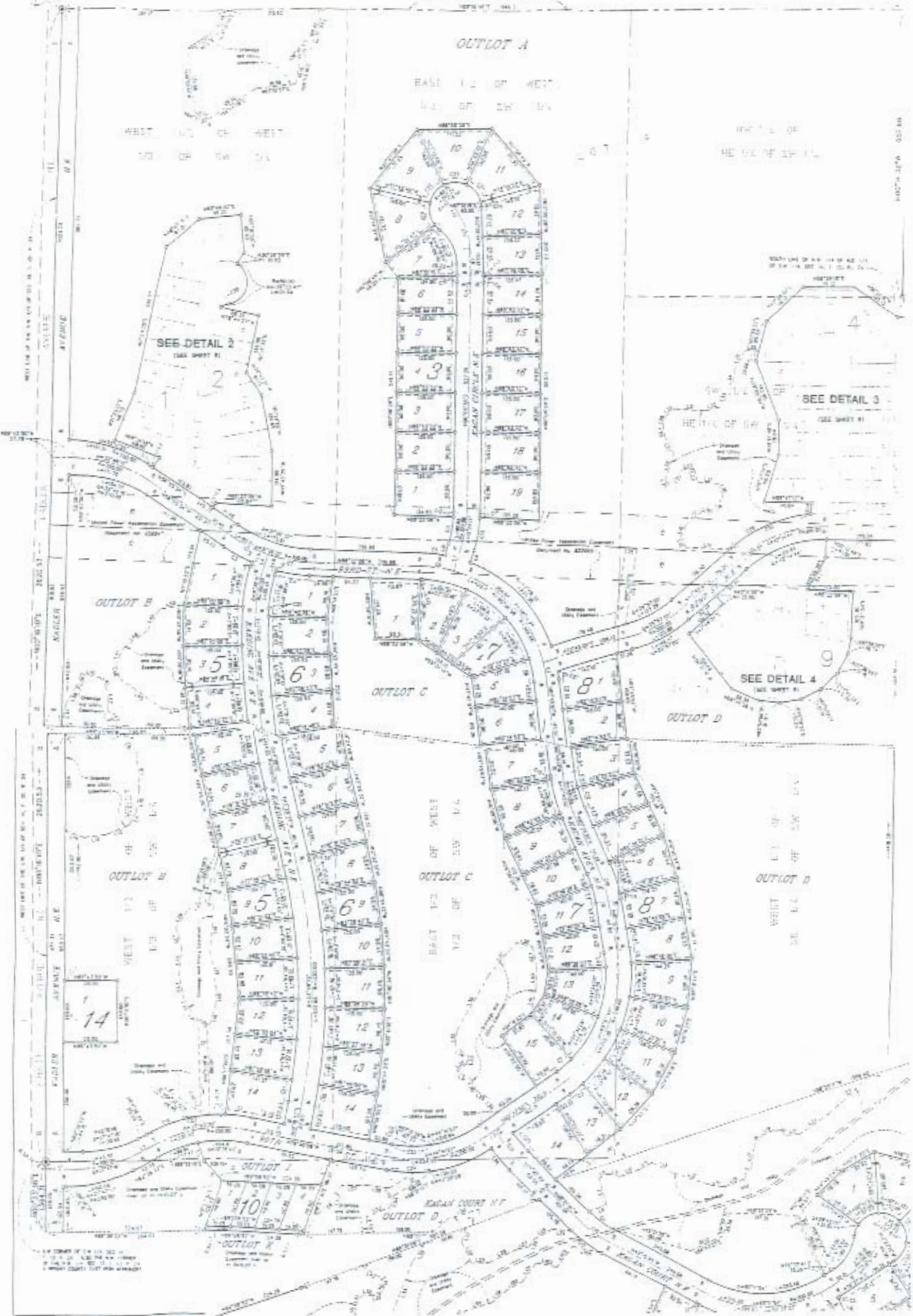


# RIVERWOOD NATIONAL

1. Contours shown  
 2. Contours 1' or  
 more in width  
 to 10' or less

For the purposes of this map, the  
 width of the R.R. is 14' 6" and  
 the width of the highway is 40'

MATCH LINE A  
 REF. SHEET 101



1. Contours shown  
 2. Contours 1' or  
 more in width  
 to 10' or less

1. Contours shown  
 2. Contours 1' or  
 more in width  
 to 10' or less